

axxa

TECHNOLOGIES

P4 Wi-Fi

Pico Projector



User Guide

Caution!

WARNING: Please use this product as instructed. Misuse may cause injury or death.

DO NOT use while driving

DO NOT expose to water or wet surfaces. Electric shock may occur

DO NOT expose the LED to your eyes or the eyes of others

DO NOT block or restrict airflow from ventilation holes as this may cause the projector to overheat

Keep the projector, battery, or charger away from any heat sources

Caution for Battery Use

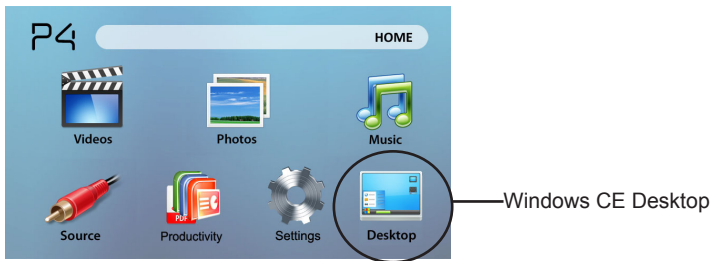
- Do not pierce or puncture the battery with sharp objects
- Do not heat the product or expose it to high temperature.
- Do not wet it or place it in any liquid

Caution for Earphone (Earplug) Use

- Prolonged use at high volume may impair your hearing.
- High volume during walking or driving may cause distractions and result in injury or death

Microsoft Windows CE

The AAXA P4 Wi-Fi runs the Windows CE operating system. All Standard Functions can be found on the Home Screen and can be manipulated with the keypad on the projector. Because we dislike locked devices, rather than locking the Windows CE Desktop we have decided to leave this function unlocked. This allows users to enjoy the full capabilities of the Windows CE operating system. However if you choose to access the desktop, please make sure you know what you are doing. It is very easy to damage or corrupt the projector or the operating system through the Windows Desktop. AAXA does not support 3rd party applications and any adjustments to the desktop. You are on your own here – please access the Windows Desktop at your own risk.



Notice: Accessing the desktop allows the user to manipulate the file system including installation of applications and manipulation of the OS control panel. Improper use can result in corruption and/or damage to the Operating System. AAXA Technologies does **NOT** provide technical support for Operating System issues. ACCESS AT YOUR OWN RISK! Use of desktop requires a mouse and keyboard. Please visit our webpage for more information

Table of Contents

2	Chapter 1: P4 Wi-Fi at a glance	17	Computer Data Transfer
2	Main Unit Front/Back	19	Saving to USB/SD card
3	Remote & Keypad	20	Connecting a Micro SD Card
4	Accessories	21	Connecting to a USB drive
5	Chapter 2: Getting Started	22	Chapter 3: Menu Screens
5	Powering On / FF	22	Main menu
6	Focus Adjustment / Throw Distance	23	Video Player Menu
7	External Inputs /Input Sources	25	Photo Viewer Menu
8	Connecting to a Computer	27	Music Player Menu
10	Connecting to Composite Video	29	Productivity Menu
12	Connecting to Speaker or Headphones	31	Windows CE Desktop
13	Connecting to Mouse/Keyboard	32	Setup Menu
15	Connecting to Wi-Fi	33	Chapter 4: Technical Details
16	Connecting to Wi-Fi Manually	33	Troubleshooting
		35	Wi-Fi Troubleshooting
		36	Specifications

P4 Wi-Fi at a Glance

Chapter 1

Main Unit Front/Back/Side



Back Button

Power Button

Confirm Selection

Reset Hole

Micro SD Card Port

Focus Adjustment

Projection Lens

Directional Pad
Charge Indicator

Mini USB Port
Full USB Port



Power Input

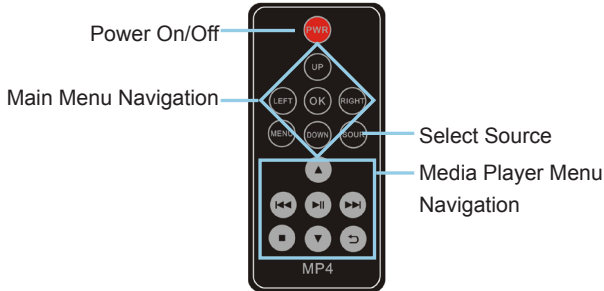
VGA Input

A/V Input

Headphone



Remote & Keypad



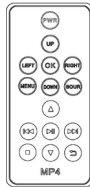
Both the keypad and remote can be used to navigate through the menus. The Main Menu Navigation on the remote functions exactly the same as the directional pad on the P4 Wi-Fi unit.

NOTICE: Pressing power on the remote will only put the projector in **STANDBY** mode. Please press the power button on the projector if you want to turn it off.

Accessories



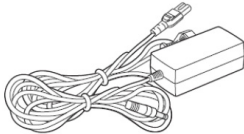
Tripod



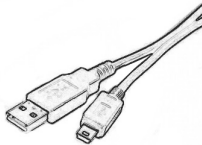
Remote



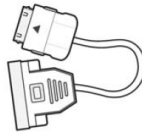
Keyboard/Mouse



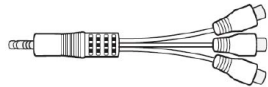
Power Adapter



Mini USB to
USB Adapter



VGA Cable



AV Cable

*Under various circumstances, the actual accessories may be different from those shown in the pictures above.

Powering ON the projector

1. Connect the power cord to the P4 Wi-Fi.
2. Connect the wall plug into the wall power source.
3. Press POWER button and hold for 2-3 seconds to switch on or switch off the power
 - The LED turns red while charging.
 - The LED turns green when charging is finished.
 - 4 hours of charge time is required to reach a full charge.

Powering OFF the projector

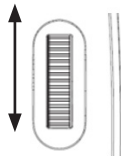
1. Press and hold the power button for 3 seconds.
2. The optical engine should power off and the fan should stop spinning.
 - Note. Pressing the power button on the remote puts the projector in standby mode. It will NOT turn off the projector.

Note: The P4 Wi-Fi Projector battery does not charge when it is in operation.

Focus Adjustment / Throw Distance

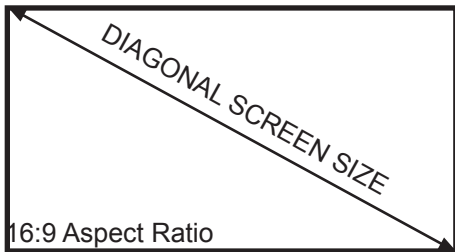
Focus Adjustment

1. Spin the focus wheel left or right until the image becomes clear.
2. The recommended focus distance for this projector is 12" to infinity.



Throw Distance Chart

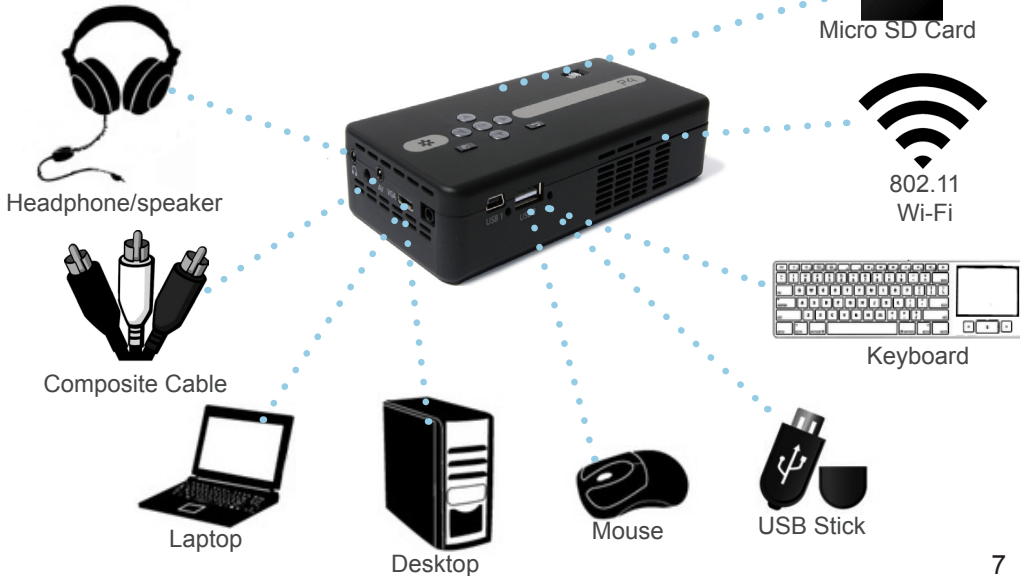
Distance inch (")	Diagonal Inch (")
12	6.3
18	9.5
24	12.6
30	15.8
36	18.9
74	38.9
84	44.2
96	50.5



Throw Ratio 1.9

*minimum throw distance: 10 inches

External Inputs/Outputs



Connecting to a Computer

Step 1:

Connect the large end of the



VGA Cord

to your computer's



VGA Adapter

Step 2:

Connect the small end of the



VGA Cord

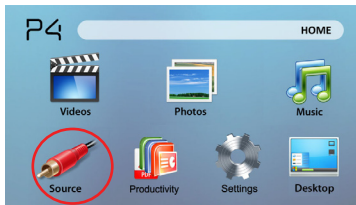
to your P4's



VGA Adapter

Step 3:

In the Main Menu



Select "Source"

Then



Change resolution

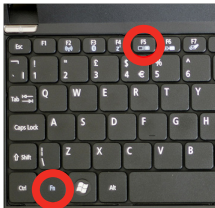


Connecting to a Computer Cont.

Step 4:

Enabling VGA output on your Computer – To enable VGA output on your computer most computers require “turning on” the video output feature. Each computer is different. Please consult your owner’s manual for instructions to enable VGA output. Below are standard instructions for a Windows XP computer – not all systems are the same.

Step 5:

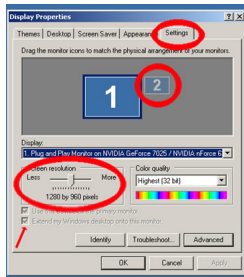


Press function & “F5” to instruct the computer to enable multiple displays.

You can also press Windows+P to toggle through display settings.

*NOTE: different operating systems may differ

Step 6:



1. Right click on computer desktop and select “Properties”
2. Display Properties window will pop up
3. Click on the “Settings” Tab
4. If a secondary monitor is grayed out, click on it and check “Extend my Windows Desktop onto this monitor”
5. If the image is blurry or the text is not legible, adjust the screen resolution. We recommend 800x600 or 1024x768.

Connecting to Composite Video

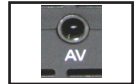
Step 1:

Connect one end of the



Composite Cord

to your P4's



AV Adapter

Step 2:

Connect opposite end of

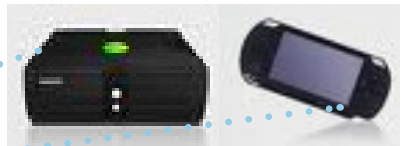


Composite Cord

to your devices



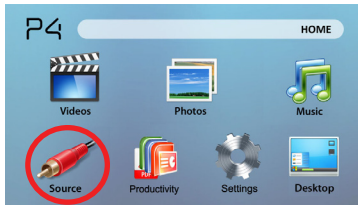
Composite Cord



Connecting to Composite Video Cont.

Step 3:

In the Main Menu



Select "Source"

Then



Choose Composite Video

Step 4:

Turn on your multimedia device.

Connectivity with multimedia devices

The P4 Wi-Fi can connect to many media devices including: iPod, iPhone, iPad, VHS players, DVD players, smart phones, cameras, video game consoles and other peripherals with ease.

*Apps on smart phones require video out capabilities to be displayed with the P4.

Connecting Speakers/Headphones



Step 1:

Connect your speaker or headphones



3.5 mm cord



Speaker Adapter

Step 2:

Ensure the power and volume on your speaker or headphones is turned on

Step 3:

Place headphones/earphones in/over ears



Caution for Earphone (Earplug) Use

- Prolonged use at high volume may impair your hearing.

Connecting Keyboard/Mouse

Step 1:

Remove the USB Adapter from the back of your Keyboard /mouse combo



Step 2:

Connect your keyboard/mouse combo's



USB Adapter

to your P4's



USB Input

Step 3:

Move the ON/Off Switch on the side of the combo.

Step 4:

Press the "red" button to sync the wireless usb adapter to the keyboard.



Mouse Touchpad

Left Click

Right Click

Connecting Keyboard/Mouse

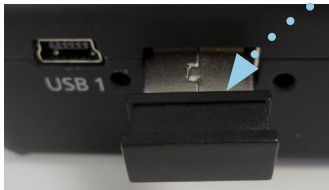
The Keyboard/Mouse that is included helps give you full functionality of the P4 Wi-Fi.

A USB mouse can be used to select most options on the P4 Wi-Fi.

- To move the cursor, place 1 finger on the pad located on the right and move your finger in the direction you wish to move the mouse.
- Hover over your selection and click the left mouse button.
- A keyboard can be used in the “desktop” feature.

Please refer to the “Desktop section of the manual for a more detailed explanation.

Wireless Signal



Connecting to Wi-Fi

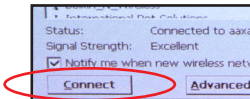
Upon start up you will be presented with a screen that will list your available discovered networks. You will be prompted to choose a preferred network.

Step 1:

Find your preferred network and double click it with your keyboard.

Step 2:

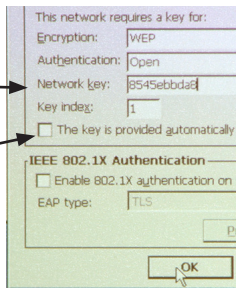
Click on "Connect"



Step 3:

The following screen will prompt you to enter your network key information

Untick the automatic retrieval box and enter your key



You should now be connected to your wireless network!

Manually Connecting to Wi-Fi

There is also the option to connect to an access point manually if you already know the configuration such as IP, subnet mask, and default gateway. You will need to enter windows by clicking Desktop from the home menu

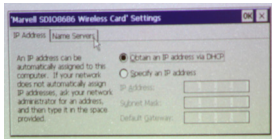
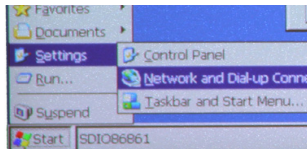
Step 1:

Enter Windows CE by clicking Desktop from the home menu



Step 2:

Navigate to settings and then you should be able to click on your network card to bring up a manual connection prompt.



Computer Data Transfer Only

Step 1:

Connect small end of the



USB Adapter

to your P4's



Micro USB Input

Step 2:

Connect opposite end of



USB Adapter

to your computer's



USB Port



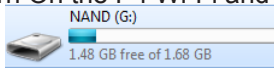
Connecting your P4 Wi-Fi to your computer for data transfer allows you to add files to store onto the onboard memory. This will allow you to play files with your P4 Wi-Fi as a standalone device.



Computer Data Transfer Only

Step 3:

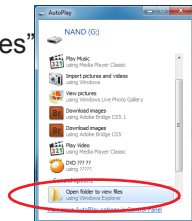
Turn On the P4 Wi-Fi and open the



OR

NAND harddrive

“Open to view files”
that autoplays.



Step 4:

Place files in appropriate folders

Video files go here

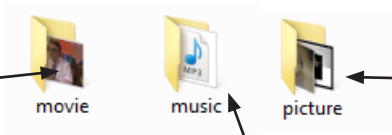


Image files go here

Music files go here

Note. If your computer fails to detect the projector, check to make sure the cable is securely inserted on both sides. If you're still unable to view the folder, please consult with your operating system's owner manual.

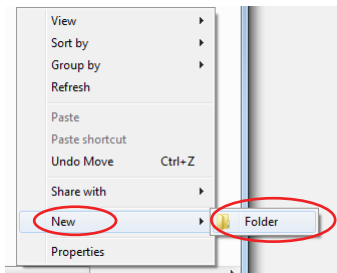
How to Save Files to your Sd or USB

In order to correctly display your media files SD or USB, the files must be placed in the correct folder.

Step 1:

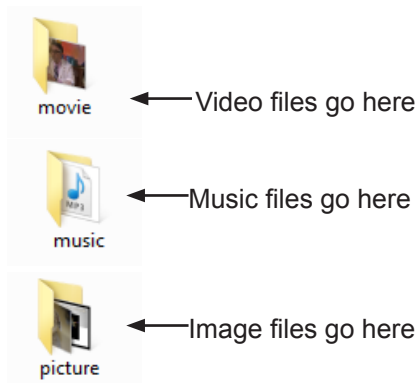
Create folders “movie”, “music”, and “picture” in all lowercase.

To do this, right click on your mouse on an empty space in your SD or USB's main folder.



Step 2:

Place files in appropriate folders



Micro SD Card

How to insert your Micro SD Card

- Slide in your SD card into the SD card slot on the front of the P4. (as shown in picture)
- Gently slide the SD card until it *clicks* into place.

How to access your Micro SD Card

- Once your SD card has been inserted, you can navigate through the main menu to select what you want to view under each sub menu. (Videos, Photo, Music)
- After selecting SD card mode you should now be able to access the data on the SD device through the onboard media player.

***Review the Specification section of this manual to read about the supported file formats.**



USB OTG(On-the-Go)

How to insert your USB Drive

- Slide your USB Drive into USB slot. (as shown in picture)
- Gently slide the drive until it cannot go in any further.

How to access your USB Drive

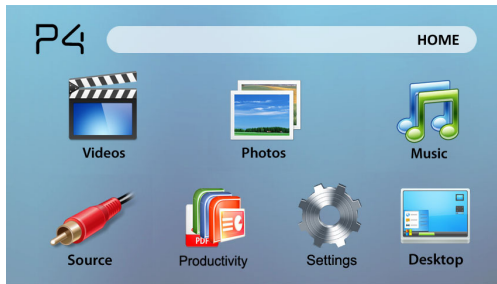
- Once your USB Drive has been inserted, you can navigate through the main menu to select what you want to view under each sub menu.(Videos, Photo, Music)
- After selecting USB Drive Mode you should now be able to access the data on the USB drive through the onboard media player.

***Review the Specification section of this manual to read about the supported file formats.**



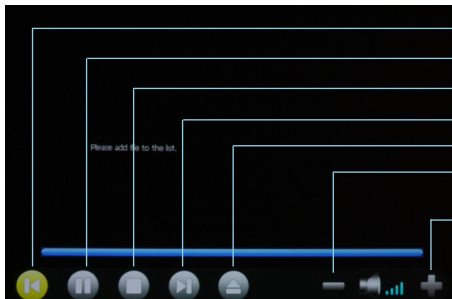
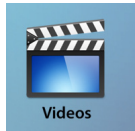
Main Menu

The P4 Wi-Fi features a built in PMP (Portable Media Player) function. This function allows the projector to play videos, pictures, music files, and text. To access the main menu simply turn on the projector.

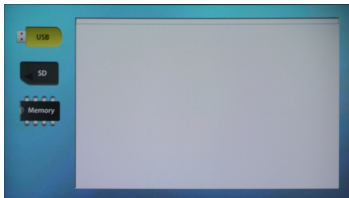


- Scroll Left/Right by pressing the rewind/fast forward buttons
- To select a submenu, highlight the desired submenu and press the Play/Pause button located in the middle of the keypad or remote.
- To go back to the previous page while in a submenu, press the back on the far right just underneath the directional keypad.

Video Player Menu



- Rewind / Back
- Pause
- Play/Stop
- Fast-Foward / Next
- Open File
- Volume Down
- Volume Up



Opening a file:

- Choose "Open File" option
- Select device file is stored on
- Select file from list

Video Player Menu

Playing Videos

To **play/pause** a video, press the play button in the middle of the keypad or remote control

To **rewind**, press and hold the left arrow button

To **fast-forward**, press and hold the right arrow button

To **jump forward** to the next video, press the right arrow button

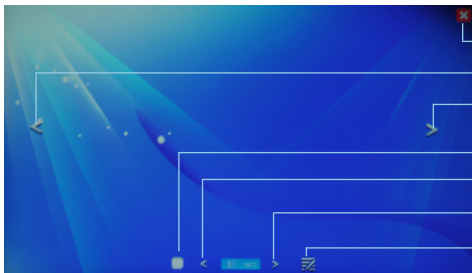
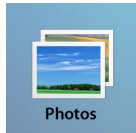
To **jump back** to a prior video, press the left arrow button

To **adjust the volume**, press the vol+ (on the remote) to increase and vol- (on the remote) to decrease the volume

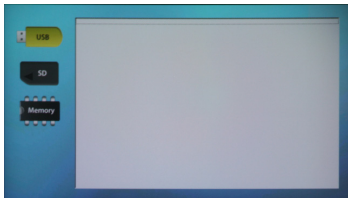
Note: If the video is large, please allow the projector a moment to process the file. If after a few minutes the projector does not play a video, it means the file is not compatible.

*Review Specification section of this manual for supported video formats.

Photo Menu



- Close Menu
- Previous
- Next
- Run Slideshow
- 1 sec to slideshow
- +1 sec to slideshow
- Open File



Opening a file:

- Choose "Open File" option
- Select device file is stored on
- Select file from list

Photo Menu

Viewing Pictures

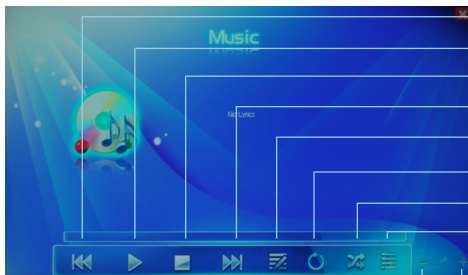
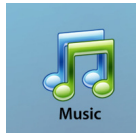
The P4 Wi-Fi Pico Projector allows you to view pictures individually or in a slideshow. To view individual photos, select the file you want to view in the file menu for the particular storage device on which the image file is stored. You can press the left and right arrow buttons on the touch pad or remote to flip through the pictures you have in the present folder.

Viewing Pictures in a Slideshow

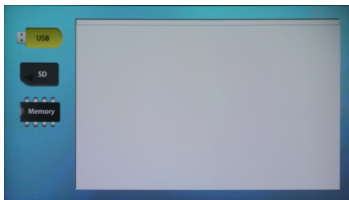
To view your pictures in a slideshow, select a file and press Play when the picture appears.

*Review Specification section of this manual for supported picture formats.

Music Player Menu



- Previous
- Play
- Stop
- Next
- Open File
- Repeat
- Shuffle
- Playlist
- Volume up
- Volume down



Opening a file:

- Choose "Open File" option
- Select device file is stored on
- Select file from list

Music Player Menu

Listening to music

To **play/pause** a song, press the play button in the middle of the keypad or remote control

To **rewind**, press and hold the left arrow button

To **fast-forward**, press and hold the right arrow button

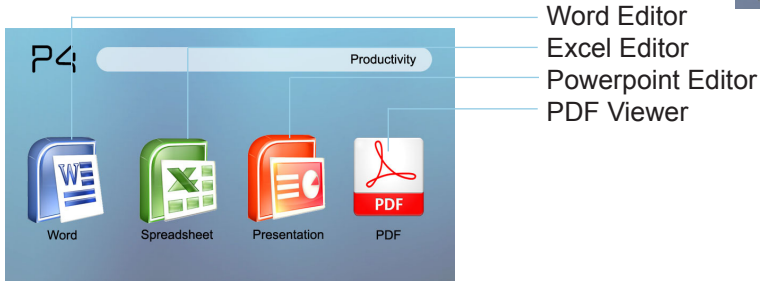
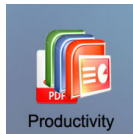
To **jump forward** to the next video, press the right arrow button

To **jump back** to a prior video, press the left arrow button

To **adjust the volume**, press the vol+ (on the remote) to increase and vol- (on the remote) to decrease the volume

*Review Specification section of this manual for supported video formats.

Productivity Menu



From this menu you are able to access the Windows Microsoft Suite that is embedded into the P4 Wi-Fi. You can access and edit various files as long as they are available through SD, USB, or the onboard memory.

Softmaker Serial

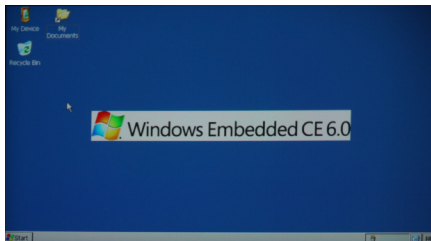
Softmaker is an embedded software that allows the P4 Wi-Fi to become a stand alone editor for on-the-go changes to your presentations.

You can find your Softmaker Serial number on the back of this manual.

Entering the Softmaker Serial will register the devices software to you and allow you to access the software features past the 30-Day trial.

Upon start up the software prompts for your user information. This information is to embed into documents and is not necessary or part of registration.

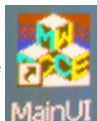
Microsoft Windows CE



The Windows CE Desktop allows users to load, install, and manipulate any third party applications that are supported by Windows CE including word processing, spreadsheets, games, and other applications.

A Keyboard and Mouse is
REQUIRED to use the Windows CE Desktop

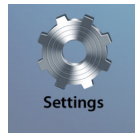
NOTE: To Exit Desktop mode, double click the



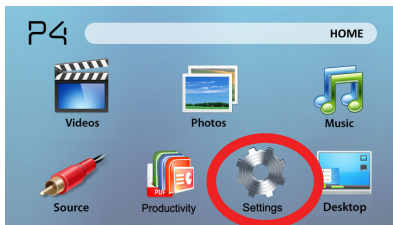
button located on the desktop!

Technical Support for the Desktop is not available. Please direct any questions to aaxatech.forumotion.com and we will do our best to assist you.

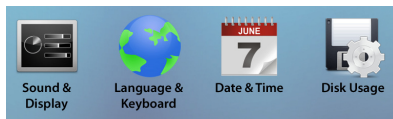
Setup Menu



The Settings Menu can be accessed by selecting “Settings” on the main menu



There are 4 menus in the settings menu



Sound & Display

Volume Settings

- Allows the raising or lowering of volume

Picture Adjustment

- Brightness, backlight and color temperature options

IMAGE FLIP

- Flips image upside down (for rear projection)

Date and Time

- Adjust Date and Time

Language & Keyboard

- The projector allows you to choose from different languages
- To choose the language of your choice, highlight the language you want and press play.

Disk Usage

- Displays total memory used on the P4's onboard memory as well as an SD card if inserted

Troubleshooting

IMAGE IS BLURRED

Possible Causes	Solution
The Projector is not in focus	Adjust the focus with the focus adjustment dial until the image comes into focus
The Projector is offset from plane / angle of operation	Move the projector so that it is both 180 degrees and on an even plane with the screen.

No Sync, No Signal

1. Be sure to setup the computer to enable a video signal output. On some laptops this is done by pressing and holding Function F5 key. If using the P4 Wi-Fi as an external monitor on Windows based systems, this can be done by selecting “extend my desktop to this monitor”. The native resolution of the p4 projector is 858x480 and accepts up to 1024x768. Depending on the video driver different resolutions may need to be selected for proper output.

Technical Details

Troubleshooting

THE PROJECTOR DOES NOT TURN ON

Possible Causes	Solution
There is no power	Check to ensure the power outlet or battery source is good. check the power adapter to ensure a proper connection with the wall outlet as well as the projector. Confirm that the unit is charged and has enough power
The power button was not held long enough	To power on the projector, the power button needs to be depressed for a full 3 seconds. try holding the power button until the optical engine turns on

NO PICTURE / FILE NOT SUPPORTED

Possible Causes	Solution
The video source is not properly connected or selected	Check the video source signal to ensure that it is properly connected. Select the current input source by choosing the input desired from the main menu
Incorrect file extension / Video is encoded with incorrect codec	Please refer to "Specifications" page to see which file types and codex are supported. Verify that the file was encoded properly.

Technical Details

Troubleshooting Wi-Fi

Wi-Fi Does Not Connect

Possible Causes	Solution
Router is not assigning proper authentication	Check to see that your routers are on. Many times when devices need to connect a router reset might be needed. Pull the power cord on your router and try reconnecting when the router has stabilized
Router is not accepting encryption key	Ensure that you are entering the proper authentication key with the proper encryption settings. Remember to take into account capital letters and numbers.

Cannot access network card

Possible Causes	Solution
Start-up network prompt	The network card is accessible only through Windows CE mode. Upon entering Windows CE mode navigate towards the bottom left of the screen where you will see a network icon in the icon tray.
Network icon tray is unresponsive	If the network icon in the icon tray becomes unresponsive reboot the device after saving any open documents.

Specifications

Brightness	100 Lumens
Native Resolution	WVGA(858x480)
Maximum Resolution	WXGA(1280x800)
Contrast Ratio	2000:1
Projectoin Lens:	Manual Focus
Image Size:	10~80 inches
Lamp:	20,000 hour RGB Triple LEDs
Video in:	Composite A/V
	VGA(mini-VGA)
Wireless:	802.11 b/g
Audio Output:	1.0 W stereo speakers
	3.5 mm audio jack
SD Card	SD-HC Card Slot
	(32GB maximum)
USB:	USB OTG (On-the-Go)
	(Memory Sticks)
	USB Data Transfer
Dimensions	172x71x31mm
Weight	0.5 lbs
Supported File Formats	AVI, MPG. MP3,

Please direct all customer service inquiries to:

AAXA Technologies, Inc.

103A East Alton

Santa Ana, CA 92707

(714) 957-1999

info@aaxatech.com