

P1 PROJECTOR PACKING LIST



PROJECTOR



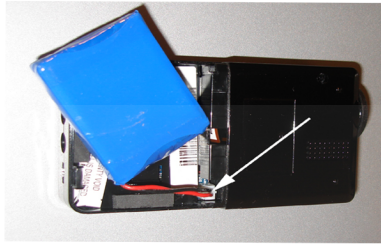
A/V CABLE



100-240V AC ADAPTER

QUICK START INSTRUCTIONS

1. Open the battery cover and plug in the battery harness



2. Charge the P1 projector for at least 10 minutes.

3. Turn the projector on by selecting either BAT (Battery) or DC (power supply). The projector lamp should turn on.



4. Enter the main menu by holding down the Play button for 3 seconds



IMPORTANT

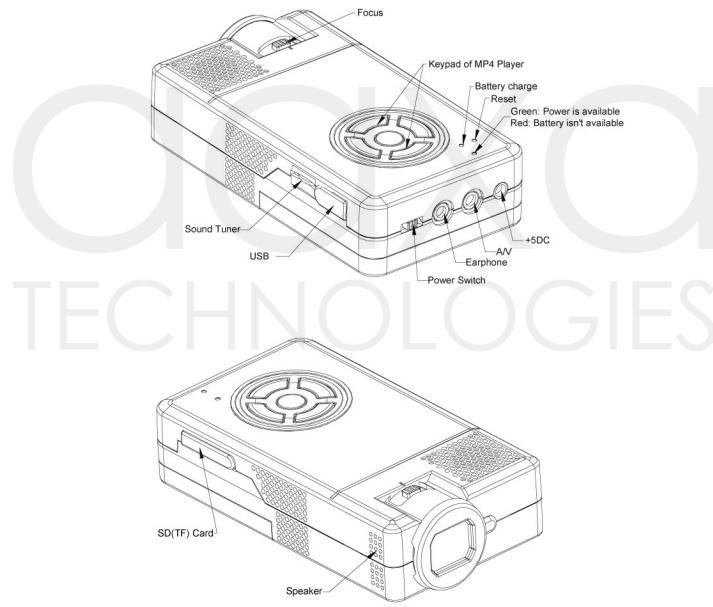
Thank for purchasing the Aaxa Technologies P1 Pico Projector.

- This product is a micro projector with Video and Picture projector capabilities along with the ability to connect to mobile phones, ipods , iphones, PSP, PDA's, DVD players, Notebooks, and any other devices that are capable of supporting a composite video output and 640x480 resolution.
- Before using the product, please read the manual carefully.
- Due to safety reasons the projector is shipped with the battery unplugged. Please be sure to plug in the battery before use.
- Please charge for 10 minutes before using battery.
- This product has 1GB of on-board memory and has the ability to accept TF/Micro SD cards of up to 2GB.
- Please be sure to leave at least 30 MB of free space in the onboard memory to allow proper operation of the Operating System (OS).
- If OS is not functioning or responding, please press the RESET button to reset the MP4 player.
- Do NOT use the P1 projector in wet or very hot places.
- The projection output resolution is 640x480 pixels. Separately, the MP4 module accepts up to 640x480 resolution.
- When you turn off the MP4 module, please wait 3 seconds before turning it back on repeatedly.
- For the latest setting information of your product, please visit our website.

INDEX

Packing List	I
Quick Start	II
Important	III
Index	IV
Overview	1
Basic Functions:	2
Other Functions:	3
Peripherals	4
MP4 key functions description:	5
MP4 features:	5
Access to MP4 Menu	6
MP4 Function Descriptions	6
1. Music Mode	6
2. Video Mode	7
3. Photo Mode	8
4. Explorer Mode:	8
5. Settings Mode	9
Troubleshooting	10

Overview



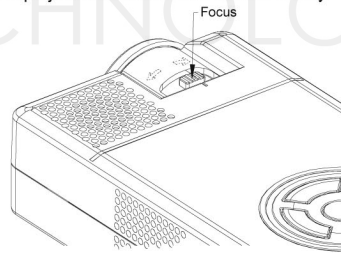
Projector Specification

Parameters	Normal	Unit	Remarks
Resolution	640x480	Pixel	
Aspect ratio	4:3		
Projection lens type	Manual focus		
Projection angle	51	Degree	
Recommended projection size	15-30 Diagonal	Inch	
Light source	LED		
Lifetime	30000	Hour	
Input	A/V		NTSC/PAL
Weight	175	Gram(s)	Including Battery

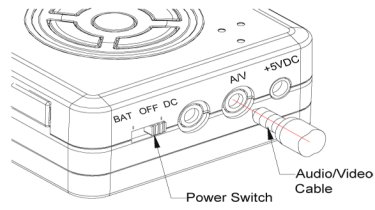
Basic Functions

1. Focus adjustment

To achieve the best quality projection image at different projection distances, please manually turn the focus knob. The focus mechanism is designed for projection distance from 0.2m to infinity.



2. AV Inputs - The main AV input cable is by 3.5mm data jack. The P1 projector accepts different 3.5mm data sources including composite video (included), Ipod / Iphone cable (optional), VGA converter harness (optional), Playstation Portable (Optional), and others. Please check our website at www.axatech.com for optional AV cables.



3. Micro SD Card

The P1 Pico Projector accepts Micro SD Cards up to 2GB. The card needs to be inserted with the data contact portion facing up and will lock into place (please see picture).



4. Mini-USB Connection

The mini-USB connection is designed to allow access to the 1GB on-board memory. This is a data connection only and not an A/V input port.

PERIPHERALS

Composite Audio / Video (A/V) Connection

The P1 projector can connect to any device that outputs composite video / audio (RCA type). The projector auto-detects the A/V cable. When the A/V cable is plugged in the main menu is not accessible. The projector will automatically display any A/V image that is sent through the cable.

Connecting to a Laptop

The P1 projector can connect to laptops via two methods. 1. Composite video output from the laptop (supported by certain video cards). 2. AAXA Tech VGA harness (sold separately)

Connecting to Iphone / Ipod

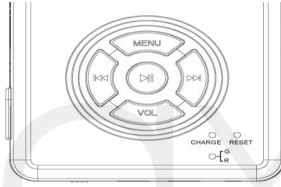
The P1 projector can connect to Iphones and Ipods via the AAXA Ipod / Iphone cable (sold separately). The cable functions the same as an A/V cable and is auto-detected. Please see your Ipod / Iphone manual on "how to output to TV" for Iphone / Ipod operating instructions. Most Iphones / Ipods will auto-detect the A/V cable. Some Ipods require selecting "video out" to display pictures and videos.

Connecting to Zune

The P1 projector can connect to Zunes via the AAXA Zune cable (sold separately). The cable functions the same as an A/V cable and is auto-detected. Users must select the "TV out" under the Settings -> Display in the Zune menu before the display is outputted.

MP4 key functions description

- MENU:** Press to access files or to go back
- VOL+▶▶:** V+ volume up (Maximum 32)
- VOL+◀◀:** V- volume down (Minimum 0)
- ▶▶:** Select next track or hold for fast forward
- ◀◀:** Select previous track or hold for fast rewind
- ▶||:** Play and Pause or hold for main menu



MP4 features

Explorer:

System Settings: System Setting, Desktop, Language, System Information.

Browsing Pictures: Browsing pictures one by one or Slide show or Thumbnail (supports JPEG, BMP and GIF format).

Video Playback: Compatible with AVI, MPEG1, MPEG2, MPEG4 3G, WMV9/VC1, ASF, RM/RMVB and FLV formats (must use software to compress the size of files to 640x480 before playing).

Audio Playback: Compatible with MP3, WMA, WAV, APE, FLAC AAC/AAC+ and MPEG1/2/2.5 formats.

MP4 Function Descriptions

1. Music Mode

- A.** Switch on the player, then select Music Mode and press [Play]▶▶ to enter sub-menu, then select and press [Resume Play] and press [Play]▶▶ to play the music. Press ▶▶ to pause.
- B.** Select music:
- ◀◀ : Select previous song
 - ▶▶ : Select next song
- C.** Volume Adjust: Press [VOL] key and
- V+ : Increase volume
 - V- : Decrease volume
- D.** Fast Forward / Rewind: Press ▶▶/◀◀ key over 1 second

OXO
TECHNOLOGIES

2. Video Mode

Select **[Video]** mode and press [Play]▶▶ to enter the menu.
Press ▶▶/◀◀ to enter the video play queue in order to select the video which you want to play. Then press ▶▶ key to play the video file.

Note 1: The RM/RMVB video only supports the video file which is below 720x576. The bigger the volume file is, longer will be the time to start the playing.. The volume of the file must be changed.

Note 2: AVI video only supports the video file which is below 800x480. The bigger the volume file is, longer will be the time to start the playing. The volume of the file must be changed.

TECHNOLOGIES

3. Photo Mode

Select **[Photo]** mode and press ► to enter the following menu:

All Photos: You can view all image files. In this mode, you can press ► or ◀ key to select a picture and then press [Play]► to view the picture.

You can press **[MENU]** key once to go back to the previous menu.

4. Explorer Mode

Select **[Explorer Mode]** and press [Play]► key. The Explorer mode window will be displayed.

Press ►/◀ to view related information about the following menu:

Internal Media, All Audio Tracks, All Video Tracks, All Image Files.

After selecting the sub-menu, press ► key once to enter and view the related information. You can also press [Menu] key once to go back to the previous menu.

In **Internal Media mode** you can view all files, including recorded files and image files.

In **All Audio Tracks mode** you can only view audio files.

In **All Video Tracks mode** you can only view video files.

In **All Image files mode** you can view all images information.

5. Settings Mode

Select [Settings] mode and press ► key to enter the menu:

Press ►/◄ key to select next/previous item, and press ► key once to enter the sub-menu.

You can press [Menu] key once to go back to the previous menu.

Desktop:

Under the setting menu, select Desktop, press ► key to enter, and then press ►/◄ key to select Desktop 1, Desktop2, Desktop3, Desktop4, Desktop5, Desktop6, Desktop7, Desktop8.

Troubleshooting

No Power – Check if the battery is charged / plugged in.

No Sound – Check the volume selector. Check the software volume settings. Ensure media file has good volume.

Player is frozen – On occasion some files will cause the player to crash. Unplug / plug the battery for a hard-reset.

Cannot play media file – Check to make sure media file is of compatible format and resolution. High frame rate / greater than 640x480 resolution files cannot be played.

Pictures appear distorted – Check to make sure the picture resolutions are correct. Greater than 640x480 resolutions are re-processed by the player which may cause distortion.

Cannot connect to USB port – Check USB cable. Switch USB ports.